

The Metropolitan Museum of Art New York City

Size

Total Gross Area Approximately
10,000 square feet

Major Programmatic Elements

The firm has completed a number of projects for the Metropolitan Museum of Art including:

Jack and Belle Linsky Galleries,
European Decorative Arts Galleries,
Editorial and Merchandising Center
and Museum Operations Offices.

Cost

8,000,000

Nature of Firm's Responsibilities

Architectural /Engineering Design
Contract Documents
Interiors
Security
Handicap Accessible Design
Construction Supervision

Owner

The Metropolitan Museum of Art

Date of Completion

1990



The Linsky Gallery



The Linsky Gallery

The Jack and Belle Linsky Galleries.

A unique display of a single collection; including glassware, jewelry, furniture and paintings. The design of display cases and vitrines incorporate complex environmental controls and security devices as well as concealed mechanisms for easy and efficient maintenance and relamping.

European Decorative Arts Galleries.

10,000 s.f. of gallery space devoted to the Museum's collections of French, German and Austrian decorative arts. Designed to meet strict requirements for environmental control as well as the need for flexibility and reassembly of the displays, these galleries are now the standard for installation of similar exhibits throughout the world.

Metropolitan Museum of Art Administrative Offices - New York City

Size

Total Gross Area Approximately
12,000 square feet

Major Programmatic Elements

The firm has completed a number of projects for the Metropolitan Museum of Art including:
Merchandising Center and Museum
Operations Offices.

Cost

1,400,000

Nature of Firm's Responsibilities

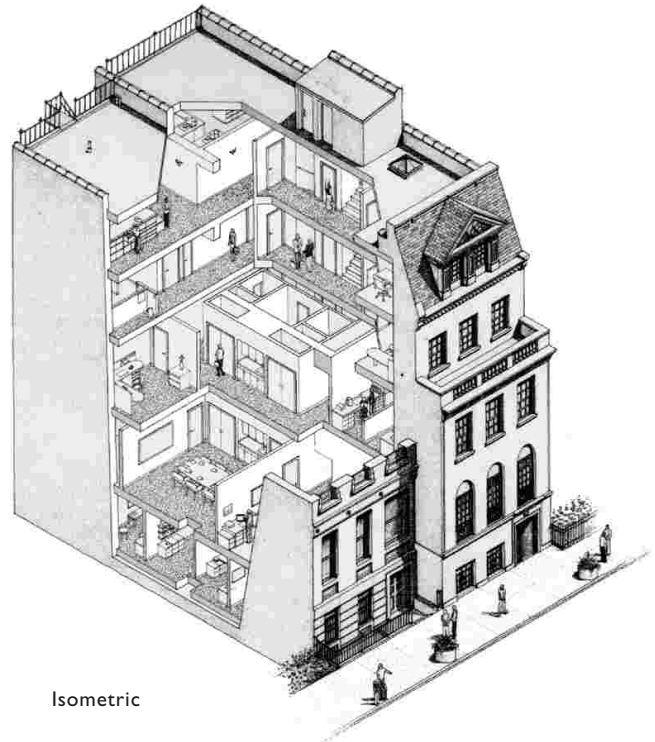
Architectural /Engineering Design
Contract Documents
Interiors
Security
Handicap Accessible Design
Construction Supervision

Owner

The Metropolitan Museum of Art

Date of Completion

1986



European Decorative Arts Gallery

Editorial, Publishing and Merchandising Center.

The former Lincoln School on 82nd Street was renovated to house an extensive array of offices, conference rooms and technical spaces. Located within the Metropolitan Museum Historic District, the conversion required close coordination with Community Boards and other city agencies including the Landmarks Preservation Commission.

Museum Operations Offices.

Renovation and upgrading of the security and personnel offices required extensive interaction with museum staff to insure "seamless" operation of these departments during construction.